



356 Lawrence Hargrave Drive Clifton NSW

2 1 1

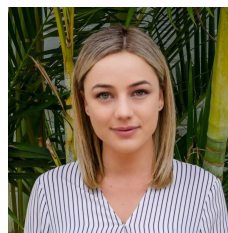
Take a look at this charming coastal cottage featuring two bedrooms with old-world charm, a spacious fenced yard for privacy, one bathroom, and a secure garage, all complemented by magnificent ocean vistas from an elevated perspective. Situated close to Imperial Hotel and other attractions, this property provides the perfect balance of serenity and access to the lively scene.

Price : \$700 pw

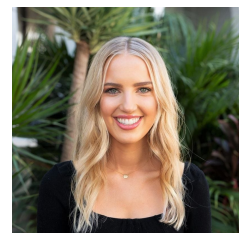
View : <https://www.amrutty.com.au/lease/nsw/wollongong-illawarra/clifton/residential/house/7928655>

Features Include:

- 2 bedrooms and 1 bathroom
- Generously sized fenced yard for privacy
- Secure single garage
- Incredible ocean vistas from high vantage point



Lexi Rowles
02 4268 1399



Amma White
02 4268 1399