



## 7a Sansey Avenue Mount Ousley NSW

1 1

This beautifully renovated mid century modern apartment has been fitted out with a neutral colour scheme and modern finishes. Featuring elevated views of the CBD and ocean views it has an enormous living area plus a large media room which could also be used as a 2nd bedroom or study etc. Provision for a laundry has been met with a space ready for front loader washing machine.

**Type** : Unit

**View** : <https://www.amrutty.com.au/lease/nsw/wollongong-illawarra/mount-ousley/residential/unit/8009093>

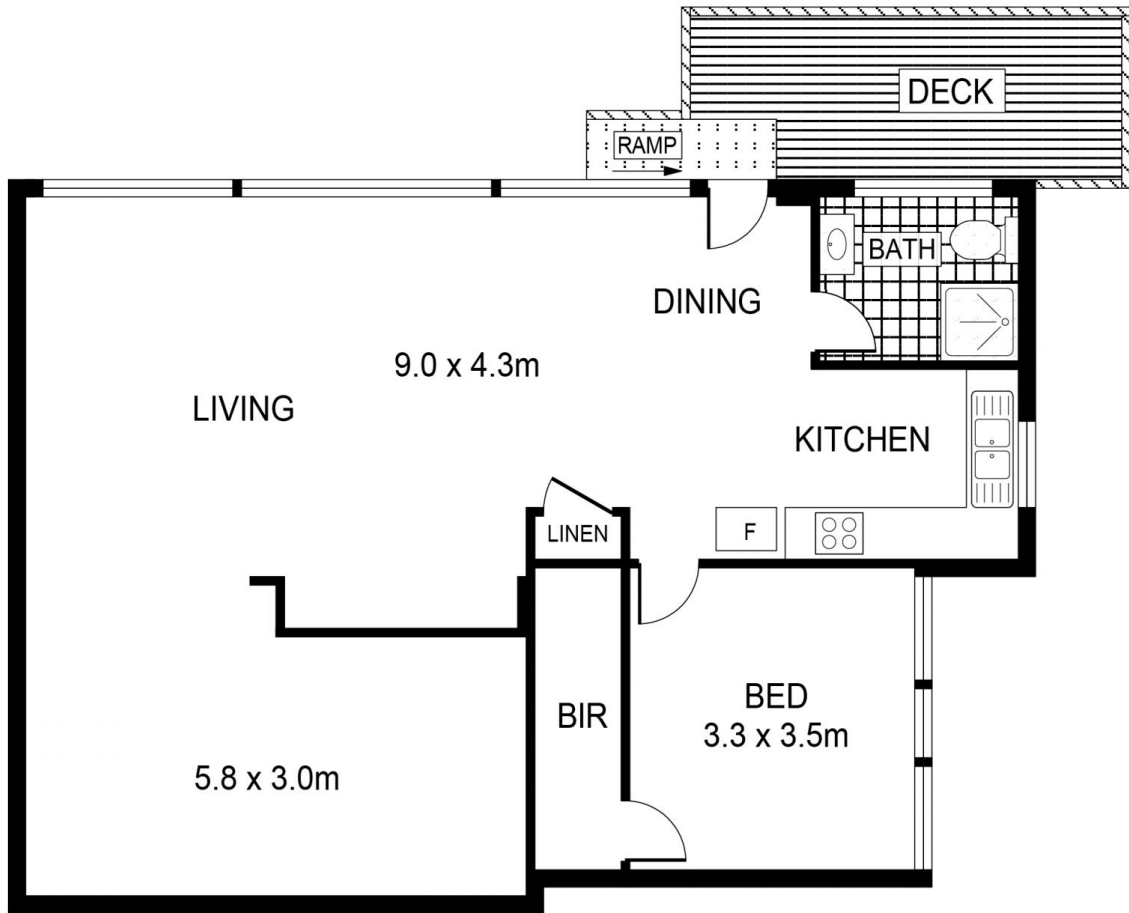
This garden apartment oozes style and is situated in a peaceful cul-de-sac regarded as one of the Illawarra's most sought after streets. Only minutes to the CBD, University and North Wollongong beach and within walking distance of the shopping precinct at Fairy Meadow.



**Lisa Pincham**  
02 4229 6311

- Brand new sleek fit out

[For full version visit the website](https://www.amrutty.com.au)



INT : 87m<sup>2</sup>  
 EXT : 9m<sup>2</sup>  
 TOTAL : 96m<sup>2</sup>

7A SANSEY AVENUE

MOUNT OUSLEY